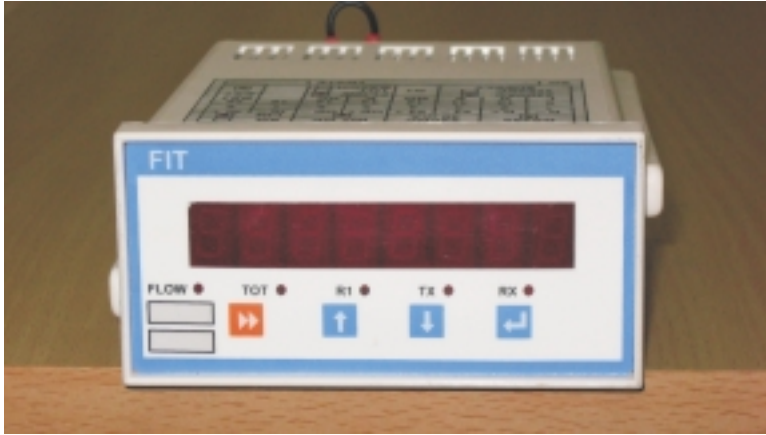


FIT

Features



- ▶ Ruggedised, State-of-the-art Micro-controller based system
- ▶ Dual functionality flow rate indication / 8 digit flow totalizing and SETPOINT on Batch / Flow Rate
- ▶ User configurable flow rate range
- ▶ Field settable flow totalizing rate
- ▶ Relay output - Optional for Batch or Setpoint operation
- ▶ 24VDC 30 mA Excitation Supply for external use
- ▶ Retransmission output - Optional
- ▶ Serial communication port with MODBUS RTU protocol - Optional
- ▶ Functions for Flow Rate Zero, Cut and Hysteresis programmable

Application

Flow Indicator Totaliser model **FIT** is a panel mounted instrument with multi-functionality viz. Flow Rate indication, Flow Totalising, batch counter & alarm for instantaneous flow. It accepts mA signal proportional to flow rate from flow transmitter. Flow Transmitter can be DPT with orifice assembly, Rotameter, Magnetic Flowmeter etc. with output of 4-20 mA

FIT displays instantaneous flow rate / Totaliser on 8 digit LED Display. Flow Rate and Totaliser range can be configured as required even at site.

Totaliser is a 8 digit LED Display. Totaliser can be reset and start manually or **externally Start / Reset as optional**. The unit incorporates one relay, which can be used for alarm for instantaneous flow or for batch counter.

Power Supply for external transmitter (24VDC@ 30 mA) is a standard feature. It eliminates need of separate

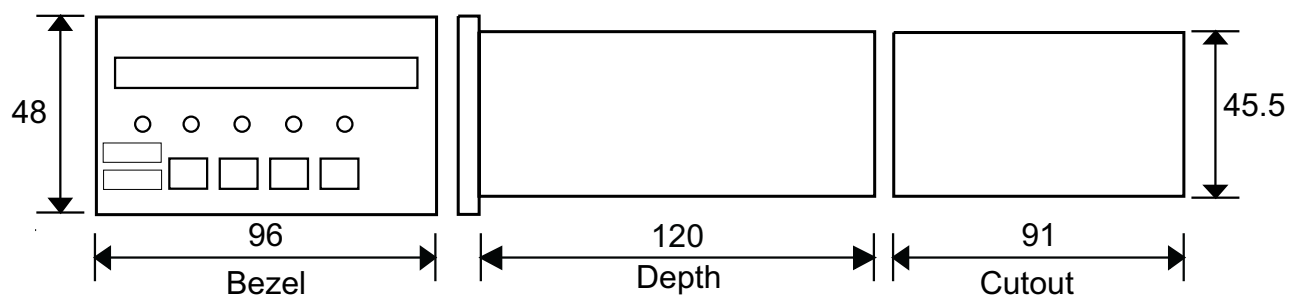
power supply to power the transmitter. For batch counting, batch count can be set. When flow total equals preset count, system gives a contact output. Hysteresis is also available for batch/totaliser setpoint. It can be used for control operations like dosing, stoppage etc.

Optional

- Relay output for Flow set point or Batching relay
- **FIT** also provides linear 4 - 20 mA retransmission signal for other panel mounted instruments like recorders, controllers etc. by external Link.
- Serial connectivity on RS485 port with **MODBUS RTU** protocol

Dimensional drawing

All dimensions are in mm



FIT

TECHNICAL SPECIFICATIONS

Input	4 - 20 mA DC Linear or Square root corresponding to flow rate, Factory set
Display	8 Digit 7 Segment LED Display selectable for Flow Rate / Totaliser.
Keyboard	4 Key Tack-tile Keyboard
Resolution	4 and 1/2 digit for Flow rate
Accuracy	$\pm 0.3\%$ of FS, ± 1 LSD (Flow) and ± 2 Count (Totaliser)
Totaliser	8 Digit Totaliser for flow
Scaling	Flow Rate and Totaliser, span and zero are scalable by Software
Data Storage	Totaliser value and set points stored in Lithium Battery backed RAM.
LED Indications	LED indications for Relay, Serial Communication & Display Selection
Excitation	24 VDC,30 mA excitation supply for external Flow Transmitter
Re-transmission Optional	Link Output 4 - 20 mA re-transmission for external indicators / recorders or PLC. Maximum load resistance 500 Ohms
Remote Reset Optional	Remote Totaliser Start/ Reset facility through potential free switch input
Alarm Output Optional	One relay operating on flow rate or for Batching
Serial Port Optional	RS485 port with MODBUS RTU protocol for on-line communication
Supply	230 VAC or 110 VAC, $\pm 10\%$, Single Phase, 50 Hz. Factory set
Connections	On Screw Type Connectors
Cabinet	Panel mounting type. Bezel: 96 x 48mm (W x H) Depth: 120 mm Cutout: 91 x 45.5 mm (W x H)

Note : Due to continuous development specifications may change without prior notice

Manufactured by: