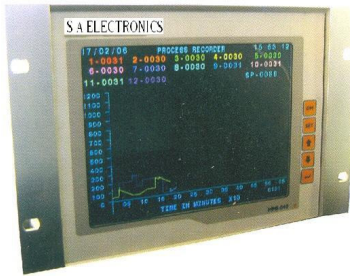


HMI series

DIGITAL PAPERLESS RECORDER / DATALOGGER



S A ELECTRONICS revolutionized the paper recording industry with the introduction of the cost-effective HMI series of paperless recorders.

S A ELECTRONICS MAKE Paperless Recorder products serves industrial market requirements for high quality data acquisition and monitoring products and systems. Incorporating the latest in color LCD technology and data storage media, our range of recorders have always lead the way in this dynamic marketplace. Our data acquisition products are supported by the powerful DAS, a suite of Windows-based PC software packages, which provide extensive data analysis, graphing, and archiving facilities.

S A ELECTRONICS is leading the industry into the new millennium with a range of advanced paperless recorders for the process manufacturing market worldwide.

Paperless Recording Benefits:

- Eliminate costs by removing pens, paper and maintenance associated with paper recorders.
- Improves productivity through efficient data transfer to PC's and spreadsheet programs.
- Optimize management of recorded information.

HMI Paperless Recorder General Specifications

- TFT Active Matrix Color or Bright Monochrome STN display for easy reading.
- 8,16,24,32,48, or 60 Universal DC V/I, T/C and RTD inputs. (T/C Should be ungrounded).
- Ethernet TCP/IP and RS-485/232- isolated communications.
- Brilliant: 5.7,7.5,9.2,15" TFT Display as a front-end display for optimum readability.
- Fast: 100 mSec Scan rate for all channels, High Speed memory Cycle of 100 msec.
- Flexible: - Selectable Display Mode. Graphical or tabular Mode.
- Screen saver: Period of non-operation exceeds the setting value of parameter, recorder turns off the backlight of LCD.

Specifications

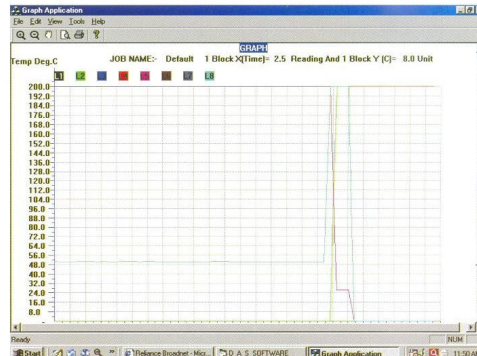
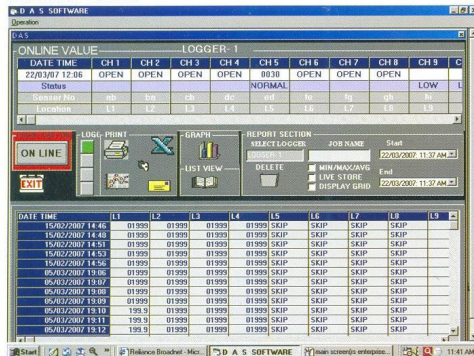
- **Mounting Method:** - Panel Flush-Mounted. (Standard)
- **Material :** - Alluminium

5.7" TFT	(640 x 480 Pixels)
7.5" TFT	(640 x 480 Pixels)
9.2" TFT	(640 x 480 Pixels)
15" TFT	(800 x 600 Pixels)

- **Power Supply:** - 24V / 12 Vdc
- **Power Consumption:** - 50 Watt
- **Input Signals:** - 4 20mA, 0 20mA, 0-10Vdc, 0 5Vdc, 0 1Vdc,RTD, T/cs;- B,R,S,K,E,J,T,N,W,L,U,P,/N

- **Input Type:** - Selectable through front Keypad
- **Burn Out Function:** - Equipped for T/cs, & RTD as standard Feature
- **Memory Capacity:** - 16MB Max Expandable to 512MB Max (Optional)
- **Life of Backlit:** - 50,000 Hrs
- **Operating Conditions:** - 0 to 50 deg C, 0 to 80 % RH Non Condensing
- **Printer Port (Optional):** - Parallel Port
- **Analog Input Resolution:** - 16 Bit
- **Touch Screen:** - Optional. (Made To Order)
- **EMC Standards:** - Complies with EN61326-1 & CE approval (Optional)
- **Mathematic Functions:** - Optional. (Made To Order)
- **Channel Grouping:** - Optional

Software Details



HTLOG - 742

DIGITAL PORTABLE PROCESS DATALOGGER

HTLOG - 742 (Portable)

- Portable, battery Powered
- Low power Consumption
- Display for both % Rh and Temperature
- Compact ABS Cabinet

FEATURE HIGHLIGHTS

- Direct Reading in case of % RH & Temperature
- 16 Bit ADC
- Resolution Selectable
- Alphanumeric LCD Display with back lit
- RS232 Interface with Windows Software
- Printer port
- Displays 2Channel Simultaneously
- Data logger with 4000 Records Per Channel
- Real Time Clock

S A ELECTRONICS HTLOG 742T series data logger/ Indicator are digital electronic marvels is a power full Datalogger. The unit can store 4,000 records per channel at the programmed interval. You can store as many data sets as you want until memory is full. The unit comes with windows-based software (windows98, NT, XP) for the display & saving.



HTLOG-742TH is a combined unit for measuring temperature & Humidity are in fact two instruments combined into one compact unit for direct reading in case of relative humidity (%RH) & dry bulb temperature without the need to select different probes. The high quality HYGROCLIP sensor module for measuring Relative humidity & temperature is 100 % Exchangeable with out readjustment which offers advantage of no loss of time in recalibrating & readjusting.

Specifications

HTLOG-742T

Input: -2 Channels, PT-100 RTD, 3 Wire
Range: - -100 to +300°C
Resolution: - 0.1/0.01°C (Selectable)
Accuracy: - +/-0.2 % F.S.D
Display: - Yellow Co lour LCD Display with Backlit
Sample Rate: -3 Seconds

Operating Conditions

0 to 50°C
0 to 80 % RH Non Condensing

Zero Drift

Nil: -Automatically Corrected By A/D converter
Warm Time; - Instantaneous
Power Supply: -9Vdc Battery (1 or 2 optional) or AC adapter

Dimensions (In mm)

Over all: (LXHxD) 66X155X25

Weight

1000gms

HTLOG-742TH

Input: - 0 to 1 Vdc
Range: - Temp -40 to +60°C , RH: - 0 100 %
Resolution: - 0.1/0.01°C (Selectable)

TYPE OF SENSOR: - Hygroclip

S A ELECTRONIC

15 D, 4th Floor, Sagar Corner, Near Nashik Phata, Kasarwadi,
Pune - 411034 Tel. : 27111582 Telefax : 020 - 27111583

E-mail : saelectronics@vsnl.net

Visit us at : www.saelectro.com

Dealer Name & Address :

Subject to change without prior notice.